



Essence Apartments, Wealdstone

£225,000 Leasehold

A stylish ground-floor one-bedroom apartment featuring its own private outdoor space. Ideally situated in the heart of Wealdstone town centre, the property offers excellent access to a wide range of transport links, including Harrow & Wealdstone station (served by the Lioness and Bakerloo lines), as well as superb local shopping amenities. Recently built, the apartment benefits from a long lease and contemporary modern design throughout.

Council Tax Band: C

EPC Rating: C

- Ground Floor Flat • ONE Bedroom • Private Terrace • Long Lease • Close To High Street • Contemporary Design



Essence Apartments, Wealdstone

£225,000 Leasehold

FURTHER DETAILS

The flat is located on the ground floor of this modern built development. Internally the accommodation comprises of an entrance hallway, that leads to the bathroom, bedroom and kitchen/reception room. Off the reception is access to the terrace.

LEASE/SERVICE CHARGE

The lease is 125 years from the 1st January 2014. The ground rent is £300 pa. The service charge for the period 1st April 2026 to 31st March 2027 is £2,725.22.

LOCATION

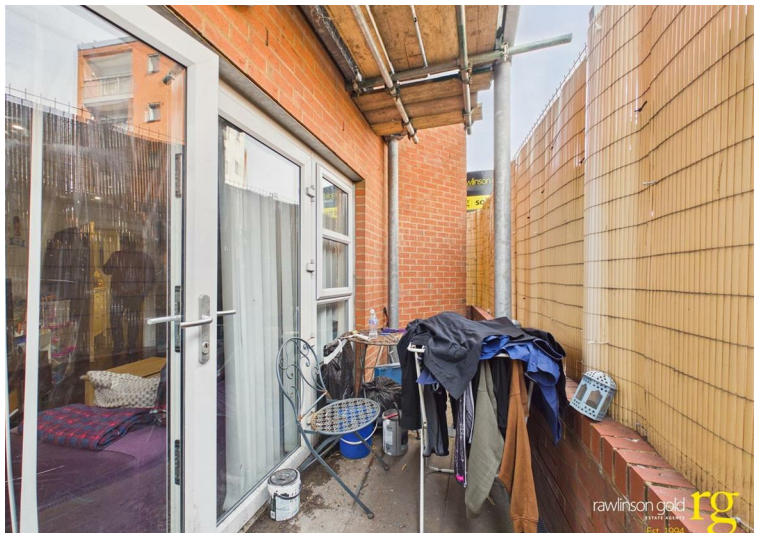
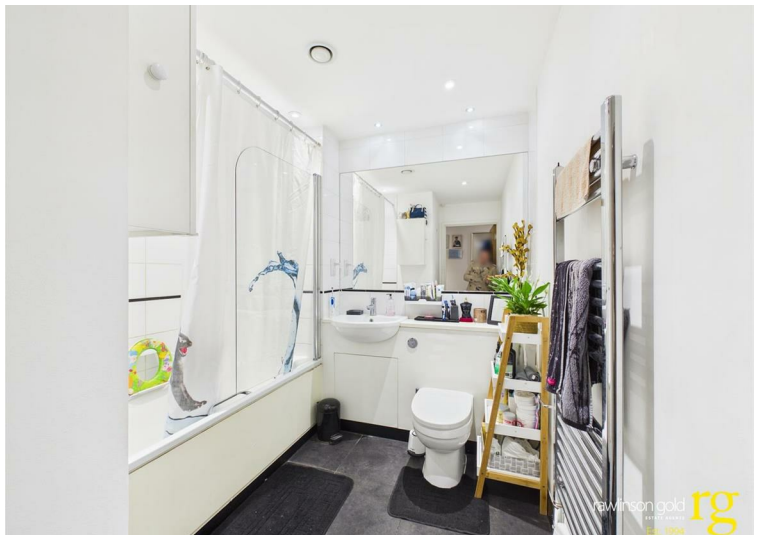
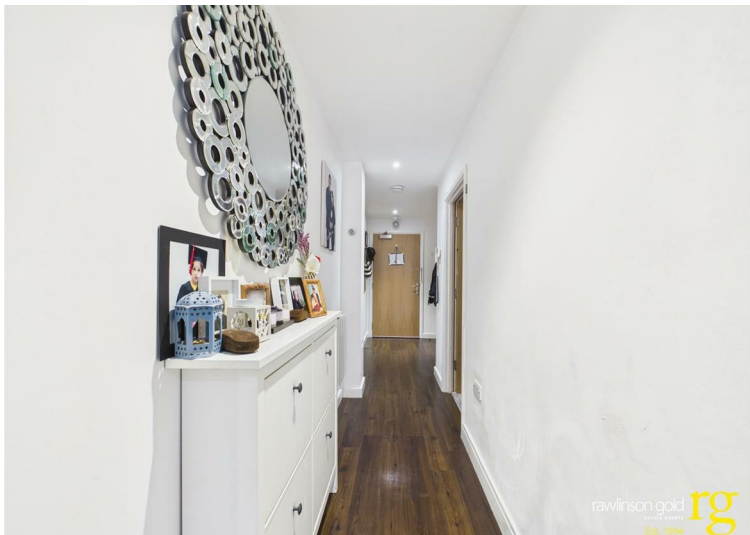
This modern flat is located with Wealdstone's shopping facilities on its doorstep. Harrow & Wealdstone Bakerloo and Lioness Line station is a short distance away, from which fast trains to Euston take under 15 minutes.

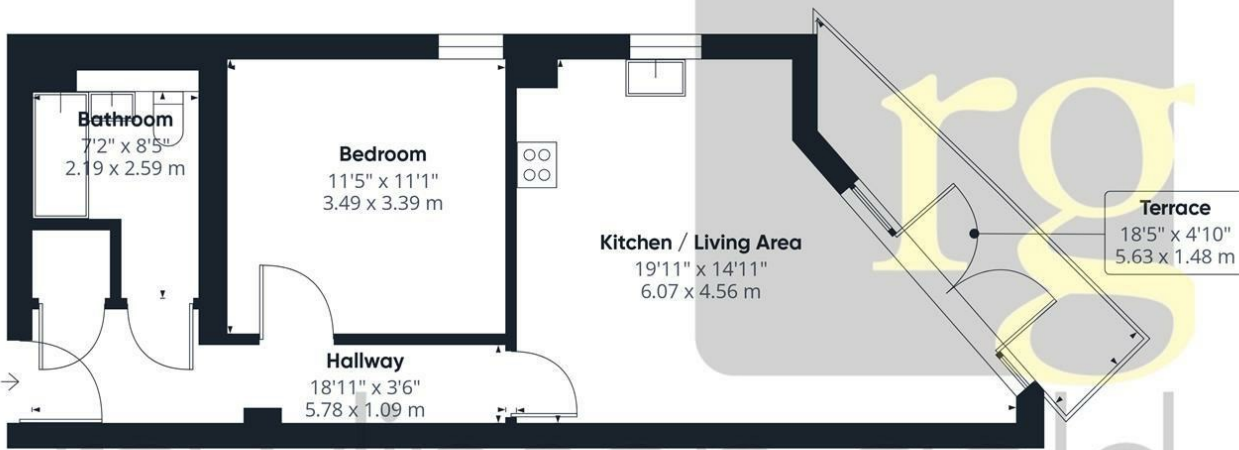
CONTACT RAWLINSON GOLD

If you would like to arrange a viewing or discuss any aspect of this property we can be contacted by telephone on 020 8861 2020 or by email on harrow@rawlinsongold.co.uk.

FREE MARKET APPRAISAL

Please contact our Harrow Office if we can be of assistance with the sale or rental of your current property.





Approximate total area⁽¹⁾

487 ft²
45.2 m²

Balconies and terraces

72 ft²
6.7 m²

(1) Excluding balconies and terraces

Calculations reference the RICS IPMS 3C standard. Measurements are approximate and not to scale. This floor plan is intended for illustration only.

GIRAFFE360



rawlinson gold